



2380 Washington Blvd. Suite 240, Ogden, UT
Public Works Conference Room 2

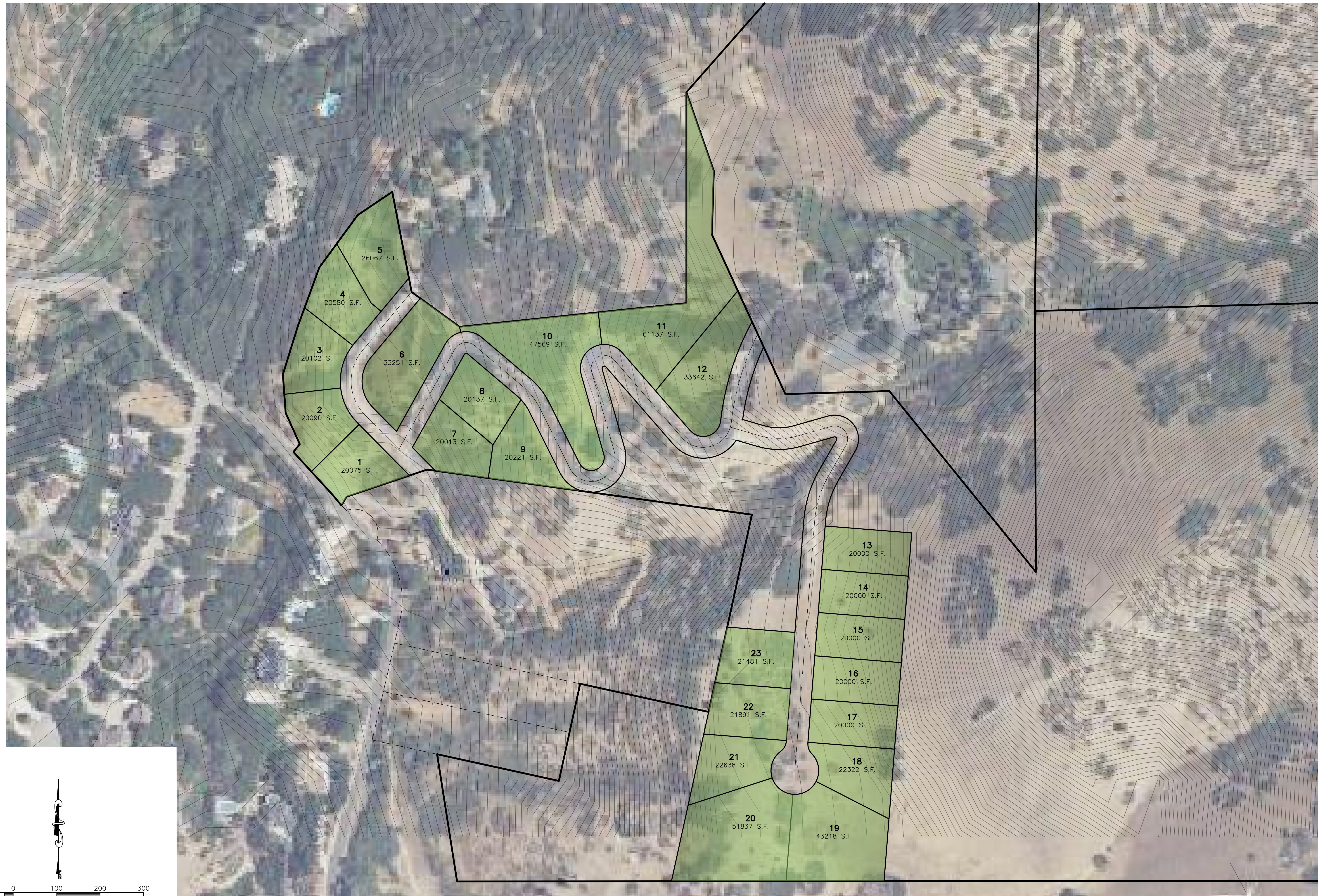
Preliminary Project Review Meeting

September 24, 2025 2:00 PM

AGENDA

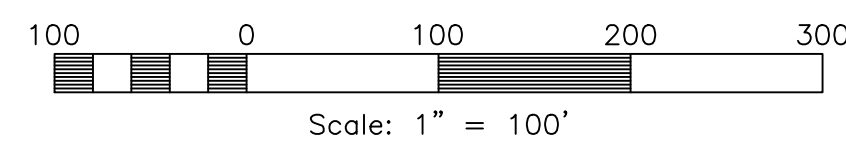
1. A discussion on creating a three-lot subdivision at the end of Artist Way, parcel numbers 21-160-0004, 21-160-0005, and 21-160-0006. The developer and owner would like to discuss options to remedy the terminal street limitations, the requirement for emergency egress, and the maximum number of lots on a terminal street route.
(Hugh Park)

Adjourn



Rasmussen Property

Weber County, Utah



Reeve & Associates, Inc.
 5160 SOUTH 1500 WEST RIVERDALE, UTAH 84405
 TEL: (801) 621-3100 FAX: (801) 621-2666 WWW: WWW.REEVE.CO
 LAND PLANNERS • CIVIL ENGINEERS • LAND SURVEYORS
 TRAFFIC ENGINEERS • STRUCTURAL ENGINEERS • LANDSCAPE ARCHITECTS

REVISIONS	DESCRIPTION
DATE	

Rasmussen Property
 PART OF THE SOUTH HALF OF SECTION 24 & THE NORTH HALF OF SECTION 25, T.5N., R.1W.,
 S.1/4 & M. U.S. SURVEY
 WEBER COUNTY, UTAH

Concept Plan

Project Info.
 Engineer: N. Reeve
 Planner: C. Cove
 Designer: E. Roche
 Date: 9-10-25
 Name: RASMUSSEN PROPERTY
 Number: 7967-02

Sheet	1
1	Sheets